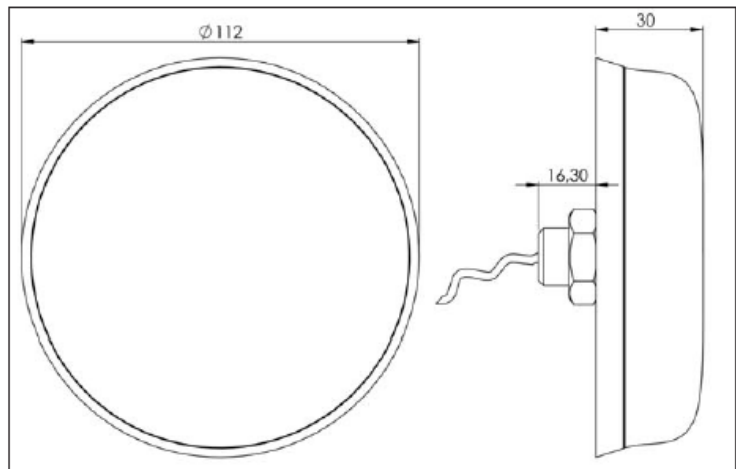


ANT-4078-MIMO

**MIMO LTE (4G) GSM 850/900/1800/1900 MHz + UMTS
incl. LTE Band: 1, 2, 3, 4, 5, 8, 25, 26 + Band 7, 13, 20**

GSM/UMTS/LTE



Technical data:

Frequency Range	GSM 850/900/1800/1900 MHz + UMTS inkl. LTE Band: 1, 2, 3, 4, 5, 8, 25, 26 + Band 7, 13, 20 (4G)
VSWR*	< 2.0 typ.
Peak Gain*	-9 dBi typ. (700 MHz) 0 dBi typ. (800 MHz) +3 dBi typ. (900 MHz) +3 dBi typ. (1800 MHz) +1 dBi typ. (2100 MHz) +2 dBi typ. (2600 MHz)
Power	max. 10 W

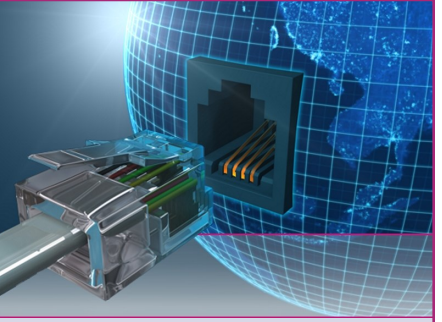
* measured with 0.60m cable on 30x30cm ground plane

Dimensions and connectors:

Dimensions (Ø/h):	approx. 112 mm x 30 mm
Mounting:	roof mounting (bracket for wall mounting on request)
Temperature range:	-40°C to +85°C (operating temperature)
Connection (standard):	2 x 3m cable RG 174 lowloss with connectors SMA (male) (other cable-lengths or connectors on request)

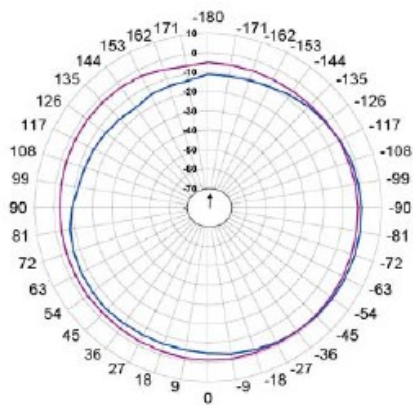
>> Waterproof TÜV passed IP69K mounted <<





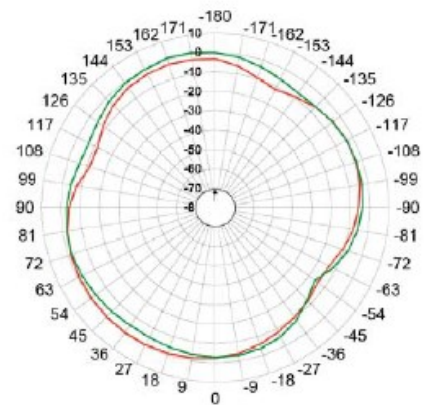
ANT-4078-MIMO

Radiation diagram



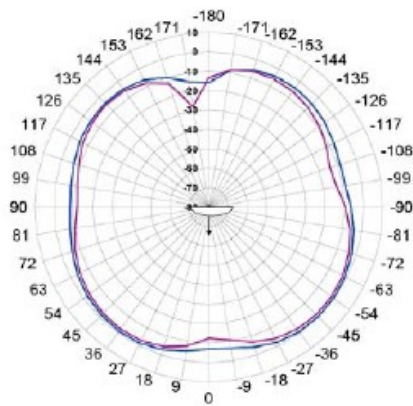
GSM 2
Azimuth

Frequenz :



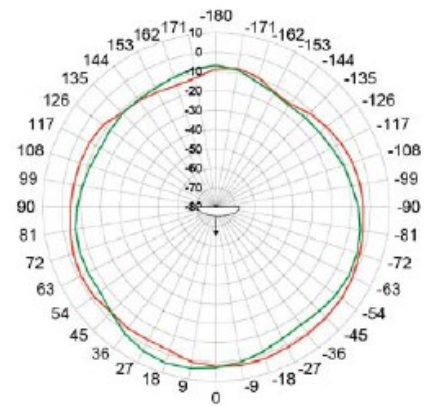
LTE 2
Azimuth

Frequenz :



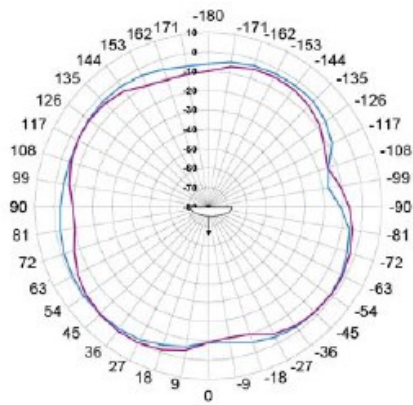
GSM 2
Elevation 90

Frequenz :



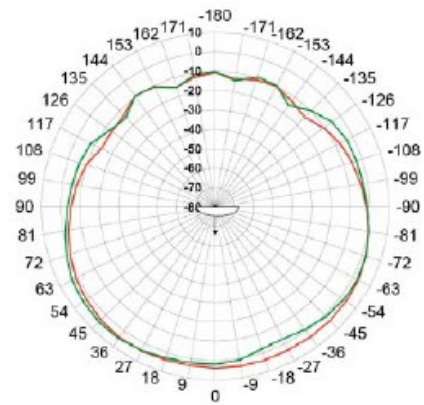
LTE 2
Elevation 90

Frequenz :



GSM 2
Elevation 0

Frequenz :

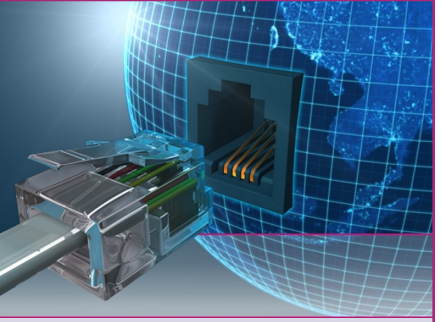


LTE 2
Elevation 0

Frequenz :

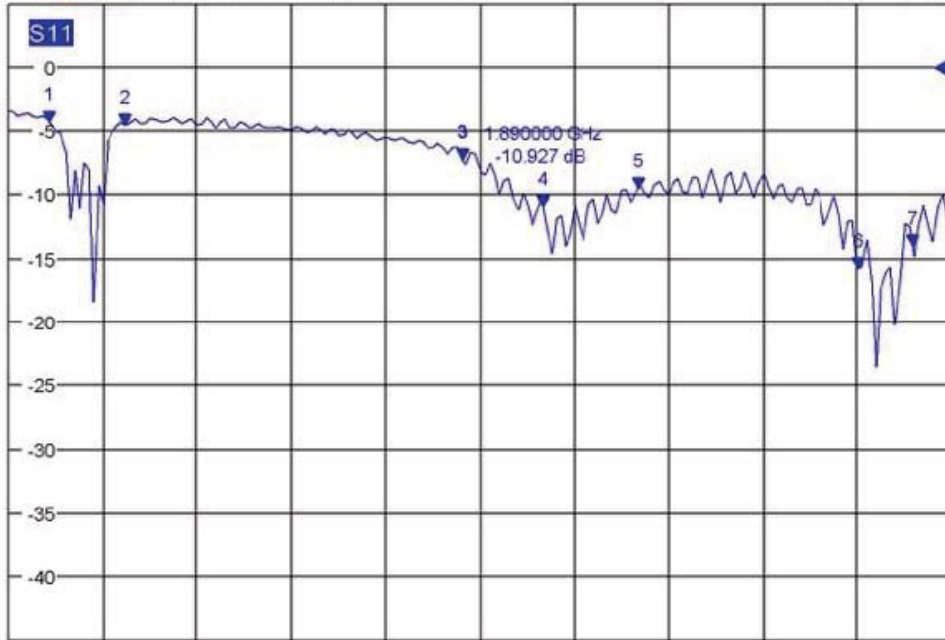


ANT-4078-MIMO



VSWR:

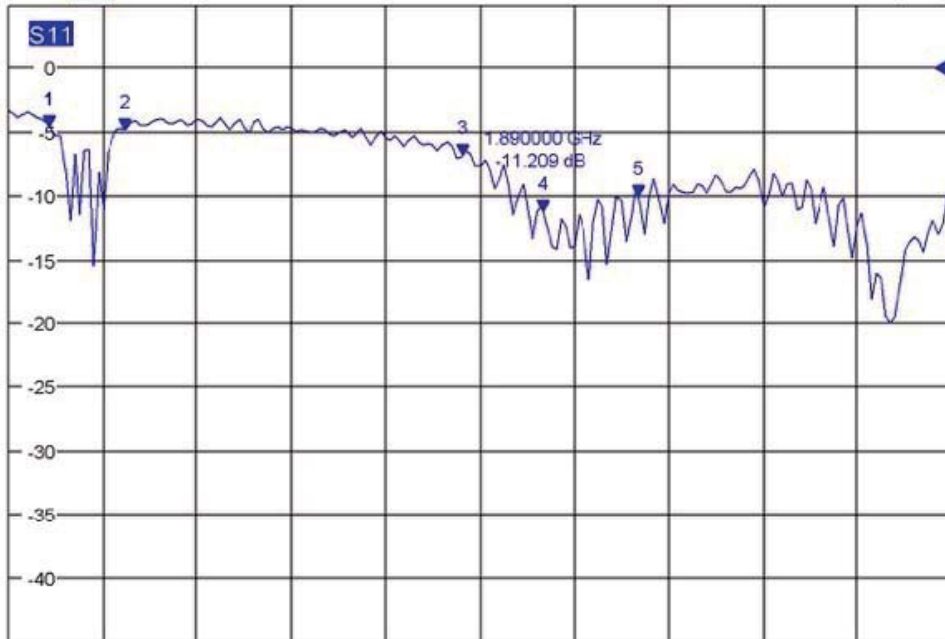
Trc1 S11 dB Mag 5 dB / Ref0 dB Cal Off 1 of 3 (Max)



Ch1 Start 700 MHz Pwr -5 dBm Stop 2.8 GHz

Date: 1.DEC.2016 16:48:44

Trc1 S11 dB Mag 5 dB / Ref0 dB Cal Off 1 of 3 (Max)



Ch1 Start 700 MHz Pwr -5 dBm Stop 2.8 GHz